



## **2021 HSBC State Lane Patterns**

### **WI HSBC State Championships (3/5/21 – 3/7/21)**

### **STORM Scholarship Doubles (3/7/21)**

### **HSBC All Star Team Challenge (3/13/21)**

**The lane patterns for the 2021 Wisconsin HSBC State Championships, Storm Scholarship Doubles and HSBC All Star Team Challenge will be as follows:**

- \* HSBC State Singles, Kegel Navigation V2 Challenge Series – Middle Road V2
- \* HSBC State Team, Kegel Landmark Challenge Series – Stonehenge
- \* Storm Doubles, Kegel Navigation V2 Challenge Series – Route 66 V2
- \* HSBC All Star Team Challenge, Kegel Challenge Series – Bourbon Street

Overhead Charts and Composite Graphs are attached to this notice.

To find out more information please go to [Kegel.net](http://Kegel.net). Click on 'Oil Patterns' in the tabs at the top of the page, which will take you to their Patterns Library.





# 2021 WI HSBC State Championships - Singles Event

## Kegel Challenge Series - MIDDLE ROAD - V2 - 5239



**Oil Pattern Distance:** 39 Feet      **Reverse Brush Drop:** 37 Feet      **Oil Per Board:** 50 uL  
**Forward Oil Total:** 16.45 mL      **Reverse Oil Total:** 7.6 mL      **Volume Oil Total:** 24.05 mL  
**Forward Boards Crossed:** 329 Boards      **Reverse Boards Crossed:** 152 Boards      **Total Boards Crossed:** 481 Boards

| Start | Stop    | Loads | Speed | Crossed | Start | End  | Feet | T.Oil |
|-------|---------|-------|-------|---------|-------|------|------|-------|
| 1     | 2L 2R   | 3     | 14    | 111     | 0.0   | 3.9  | 3.9  | 5550  |
| 2     | 6L 6R   | 2     | 18    | 58      | 3.9   | 9.0  | 5.1  | 2900  |
| 3     | 8L 8R   | 2     | 18    | 50      | 9.0   | 14.1 | 5.1  | 2500  |
| 4     | 10L 10R | 3     | 14    | 63      | 14.1  | 20.0 | 5.9  | 3150  |
| 5     | 12L 12R | 2     | 18    | 34      | 20.0  | 25.1 | 5.1  | 1700  |
| 6     | 14L 14R | 1     | 18    | 13      | 25.1  | 27.6 | 2.5  | 650   |
| 7     | 2L 2R   | 0     | 22    | 0       | 27.6  | 32.0 | 4.4  | 0     |
| 8     | 2L 2R   | 0     | 30    | 0       | 32.0  | 39.0 | 7.0  | 0     |

Forward Reverse More

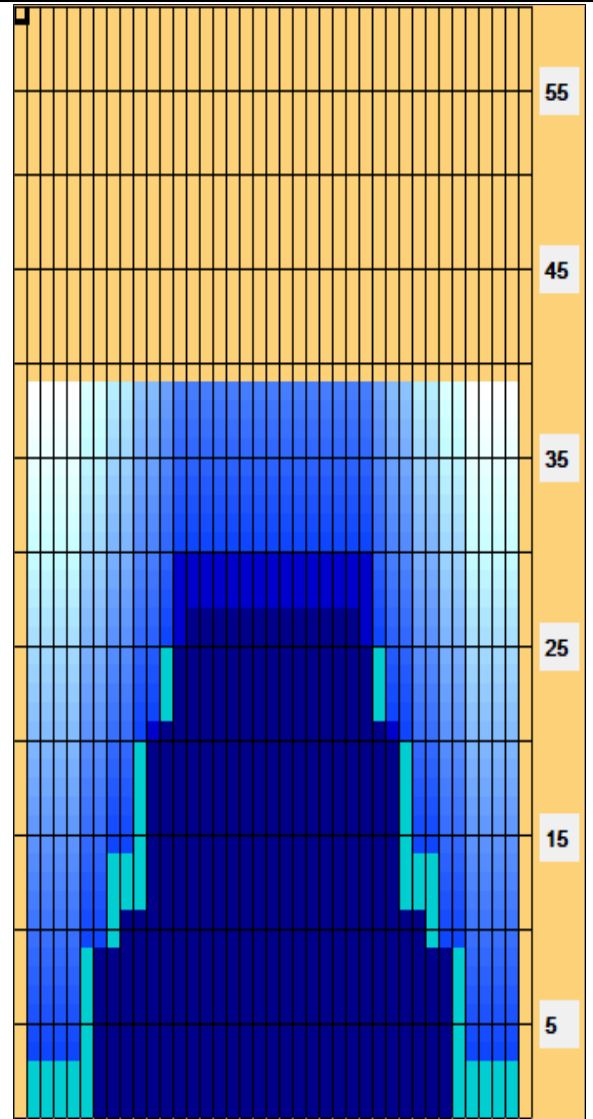
| Start | Stop    | Loads | Speed | Crossed | Start | End  | Feet | T.Oil |
|-------|---------|-------|-------|---------|-------|------|------|-------|
| 1     | 2L 2R   | 0     | 30    | 0       | 39.0  | 30.0 | -9.0 | 0     |
| 2     | 13L 13R | 3     | 22    | 45      | 30.0  | 20.7 | -9.3 | 2250  |
| 3     | 11L 11R | 3     | 22    | 57      | 20.7  | 11.4 | -9.3 | 2850  |
| 4     | 9L 9R   | 1     | 18    | 23      | 11.4  | 8.9  | -2.5 | 1150  |
| 5     | 7L 7R   | 1     | 18    | 27      | 8.9   | 6.4  | -2.5 | 1350  |
| 6     | 2L 2R   | 0     | 14    | 0       | 6.4   | 0.0  | -6.4 | 0     |

Forward Reverse More

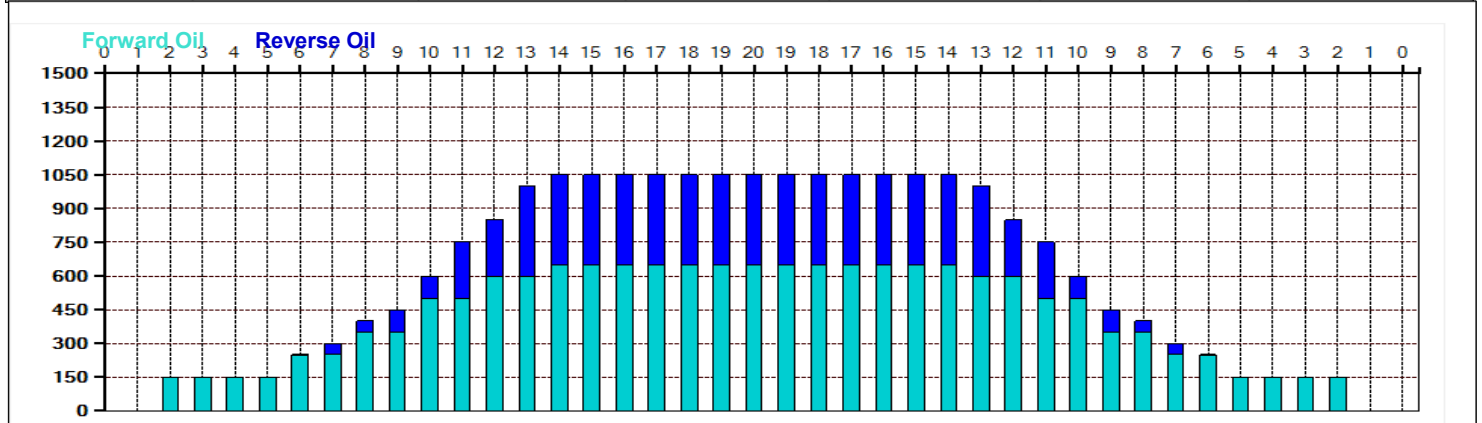
Conditioner:  
Type In or Select One

TransferType:  
Type In or Select One

- Forward
- Reverse
- Combined
- Buff



| Item             | 3L-7L:18L-18R        | 8L-12L:18L-18R      | 13L-17L:18L-18R     | 18L-18R:17R-13R      | 18L-18R:12R-8R      | 18L-18R:7R-3R        |
|------------------|----------------------|---------------------|---------------------|----------------------|---------------------|----------------------|
| Description      | Outside Track:Middle | Middle Track:Middle | Inside Track:Middle | Middle: Inside Track | Middle:Middle Track | Middle:Outside Track |
| Track Zone Ratio | 5.25                 | 1.72                | 1.01                | 1.01                 | 1.72                | 5.25                 |





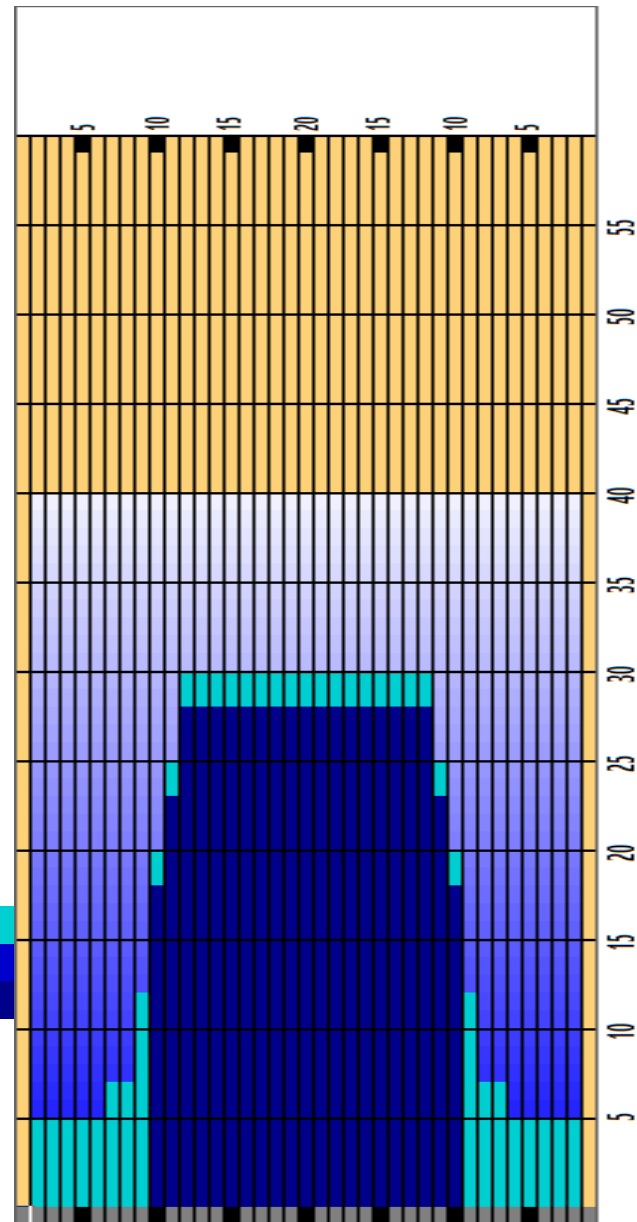
# 2021 HSBC State Championships - Team Event Stonehenge



|                      |          |                    |        |                    |          |
|----------------------|----------|--------------------|--------|--------------------|----------|
| Oil Pattern Distance | 40       | Reverse Brush Drop | 34     | Oil Per Board      | 50 ul    |
| Forward Oil Total    | 15.95 mL | Reverse Oil Total  | 7.8 mL | Volume Oil Total   | 23.75 mL |
| Tank Configuration   | N/A      | Tank A Conditioner | FIRE   | Tank B Conditioner | ICE      |

|   | START | STOP | LOADS | SPEED | TANK | CROSSED | START | END  | FEET | T.OIL |
|---|-------|------|-------|-------|------|---------|-------|------|------|-------|
| 1 | 2L    | 2R   | 3     | 18    | B    | 111     | 0.0   | 5.1  | 5.1  | 5550  |
| 2 | 7L    | 7R   | 1     | 18    | B    | 27      | 5.1   | 7.6  | 2.5  | 1350  |
| 3 | 9L    | 9R   | 2     | 18    | B    | 46      | 7.6   | 12.7 | 5.1  | 2300  |
| 4 | 10L   | 10R  | 3     | 18    | B    | 63      | 12.7  | 20.3 | 7.6  | 3150  |
| 5 | 11L   | 11R  | 2     | 18    | B    | 38      | 20.3  | 25.4 | 5.1  | 1900  |
| 6 | 12L   | 12R  | 2     | 18    | B    | 34      | 25.4  | 30.5 | 5.1  | 1700  |
| 7 | 2L    | 2R   | 0     | 22    | B    | 0       | 30.5  | 36.0 | 5.5  | 0     |
| 8 | 2L    | 2R   | 0     | 30    | B    | 0       | 36.0  | 40.0 | 4.0  | 0     |

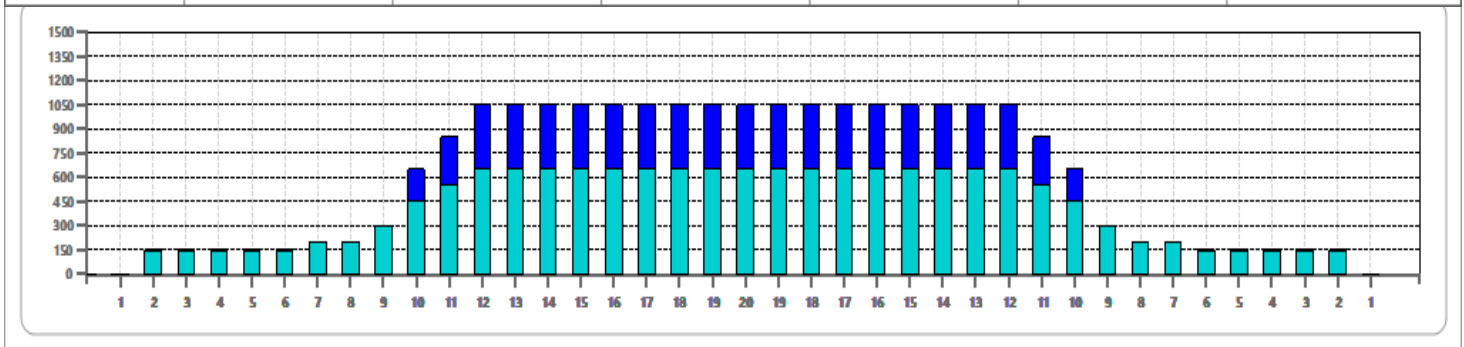
|   | START | STOP | LOADS | SPEED | TANK | CROSSED | START | END  | FEET  | T.OIL |
|---|-------|------|-------|-------|------|---------|-------|------|-------|-------|
| 1 | 2L    | 2R   | 0     | 30    | B    | 0       | 40.0  | 28.0 | -12.0 | 0     |
| 2 | 12L   | 12R  | 2     | 18    | B    | 34      | 28.0  | 22.9 | -5.1  | 1700  |
| 3 | 11L   | 11R  | 2     | 18    | B    | 38      | 22.9  | 17.8 | -5.1  | 1900  |
| 4 | 10L   | 10R  | 4     | 18    | B    | 84      | 17.8  | 7.6  | -10.2 | 4200  |
| 5 | 2L    | 2R   | 0     | 14    | B    | 0       | 7.6   | 0.0  | -7.6  | 0     |



Cleaner Ratio Main Mix                    4:1            Forward  
 Cleaner Ratio Back End Mix            4:1            Reverse  
 Cleaner Ratio Back End Distance        59            Combined  
 Buffer RPM: 4 = 720 | 3 = 500 | 2 = 200 | 1 = 50

<p> STONEHENGE - 5840 | This oil pattern is a long standing stone wall that has evolved over many years in the game of bowling. From simple grooves in the lane in the 30&rsquo;s, to the short oil walls of the 80&rsquo;s, and now the typical

| Item             | 3L-7L:18L-18R        | 8L-12L:18L-18R      | 13L-17L:18L-18R     | 18L-18R:17R-13R      | 18L-18R:12R-8R      | 18L-18R:7R-3R        |
|------------------|----------------------|---------------------|---------------------|----------------------|---------------------|----------------------|
| Description      | Outside Track:Middle | Middle Track:Middle | Inside Track:Middle | Middle: Inside Track | Middle:Middle Track | Middle:Outside Track |
| Track Zone Ratio | 6.56                 | 1.72                | 1                   | 1                    | 1.72                | 6.56                 |





# 2021 Storm Scholarship Doubles

## Kegel Challenge Series - ROUTE 66 V2 - 6245



|  |  |  |
|--|--|--|
| <b>Oil Pattern Distance:</b> <span style="color: green;">45 Feet</span>      | <b>Reverse Brush Drop:</b> <span style="color: green;">40 Feet</span>        | <b>Oil Per Board:</b> <span style="color: green;">50 uL</span>             |
| <b>Forward Oil Total:</b> <span style="color: green;">13.1 mL</span>         | <b>Reverse Oil Total:</b> <span style="color: green;">10.35 mL</span>        | <b>Volume Oil Total:</b> <span style="color: green;">23.45 mL</span>       |
| <b>Forward Boards Crossed:</b> <span style="color: green;">262 Boards</span> | <b>Reverse Boards Crossed:</b> <span style="color: green;">207 Boards</span> | <b>Total Boards Crossed:</b> <span style="color: green;">469 Boards</span> |

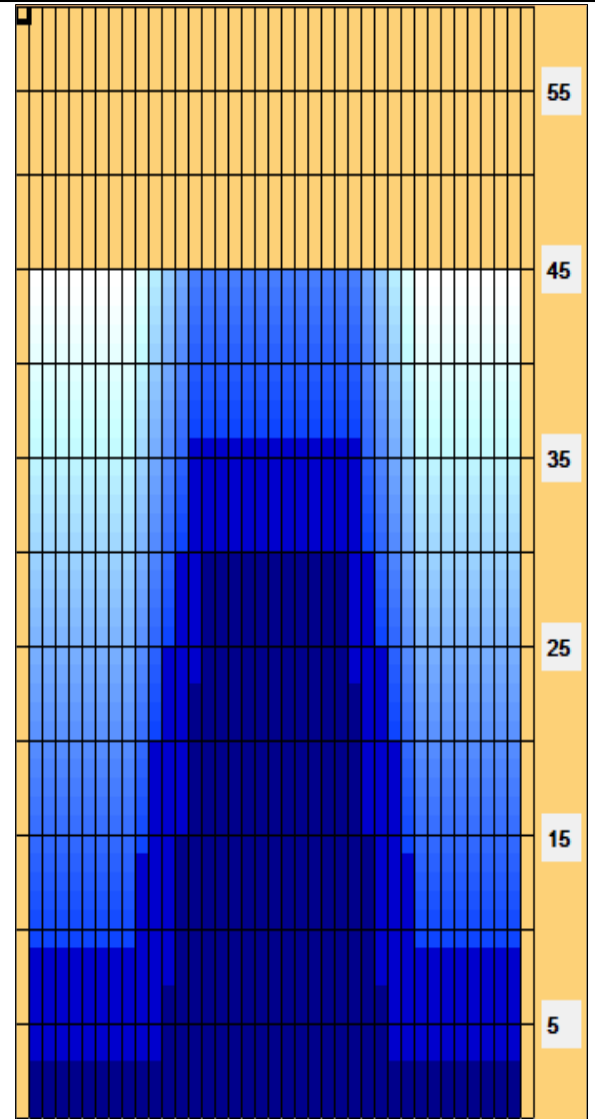
| Start | Stop    | Loads | Speed | Crossed | Start | End  | Feet | T.Oil |
|-------|---------|-------|-------|---------|-------|------|------|-------|
| 1     | 2L 2R   | 3     | 14    | 111     | 0.0   | 3.9  | 3.9  | 5550  |
| 2     | 12L 12R | 2     | 14    | 34      | 3.9   | 7.8  | 3.9  | 1700  |
| 3     | 13L 13R | 3     | 18    | 45      | 7.8   | 15.4 | 7.6  | 2250  |
| 4     | 14L 14R | 3     | 18    | 39      | 15.4  | 23.0 | 7.6  | 1950  |
| 5     | 15L 15R | 3     | 18    | 33      | 23.0  | 30.6 | 7.6  | 1650  |
| 6     | 2L 2R   | 0     | 26    | 0       | 30.6  | 36.0 | 5.4  | 0     |
| 7     | 2L 2R   | 0     | 30    | 0       | 36.0  | 45.0 | 9.0  | 0     |

| Start | Stop    | Loads | Speed | Crossed | Start | End  | Feet | T.Oil |
|-------|---------|-------|-------|---------|-------|------|------|-------|
| 1     | 2L 2R   | 0     | 30    | 0       | 45.0  | 36.0 | -9.0 | 0     |
| 2     | 14L 14R | 2     | 22    | 26      | 36.0  | 29.8 | -6.2 | 1300  |
| 3     | 13L 13R | 2     | 18    | 30      | 29.8  | 24.7 | -5.1 | 1500  |
| 4     | 12L 12R | 2     | 18    | 34      | 24.7  | 19.6 | -5.1 | 1700  |
| 5     | 11L 11R | 2     | 18    | 38      | 19.6  | 14.5 | -5.1 | 1900  |
| 6     | 10L 10R | 2     | 18    | 42      | 14.5  | 9.4  | -5.1 | 2100  |
| 7     | 2L 2R   | 1     | 18    | 37      | 9.4   | 6.9  | -2.5 | 1850  |
| 8     | 2L 2R   | 0     | 14    | 0       | 6.9   | 0.0  | -6.9 | 0     |

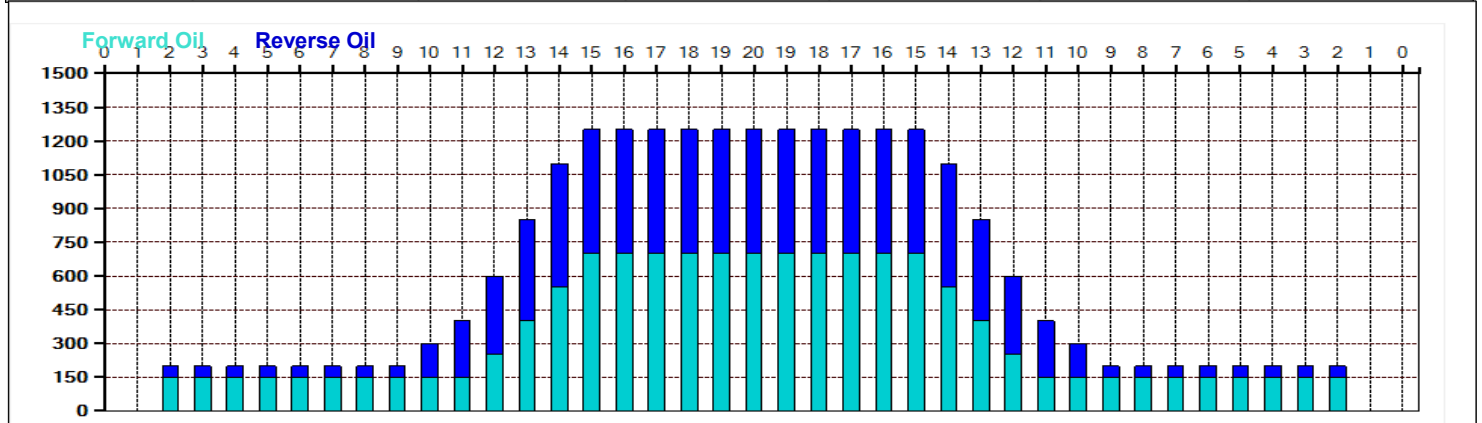
Conditioner:  
Type In or Select One

TransferType:  
Type In or Select One

- Forward
- Reverse
- Combined
- Buff



| Item             | 3L-7L:18L-18R        | 8L-12L:18L-18R      | 13L-17L:18L-18R     | 18L-18R:17R-13R      | 18L-18R:12R-8R      | 18L-18R:7R-3R        |
|------------------|----------------------|---------------------|---------------------|----------------------|---------------------|----------------------|
| Description      | Outside Track:Middle | Middle Track:Middle | Inside Track:Middle | Middle: Inside Track | Middle:Middle Track | Middle:Outside Track |
| Track Zone Ratio | 6.25                 | 3.68                | 1.1                 | 1.1                  | 3.68                | 6.25                 |



# 2021 All Star Team Challenge

## Kegel Challenge Series - BOURBON STREET - 6240



|   |   |   |
|---|---|---|
| <b>Oil Pattern Distance:</b> 40 Feet      | <b>Reverse Brush Drop:</b> 40 Feet        | <b>Oil Per Board:</b> 50 uL             |
| <b>Forward Oil Total:</b> 15.6 mL         | <b>Reverse Oil Total:</b> 7.85 mL         | <b>Volume Oil Total:</b> 23.45 mL       |
| <b>Forward Boards Crossed:</b> 312 Boards | <b>Reverse Boards Crossed:</b> 157 Boards | <b>Total Boards Crossed:</b> 469 Boards |

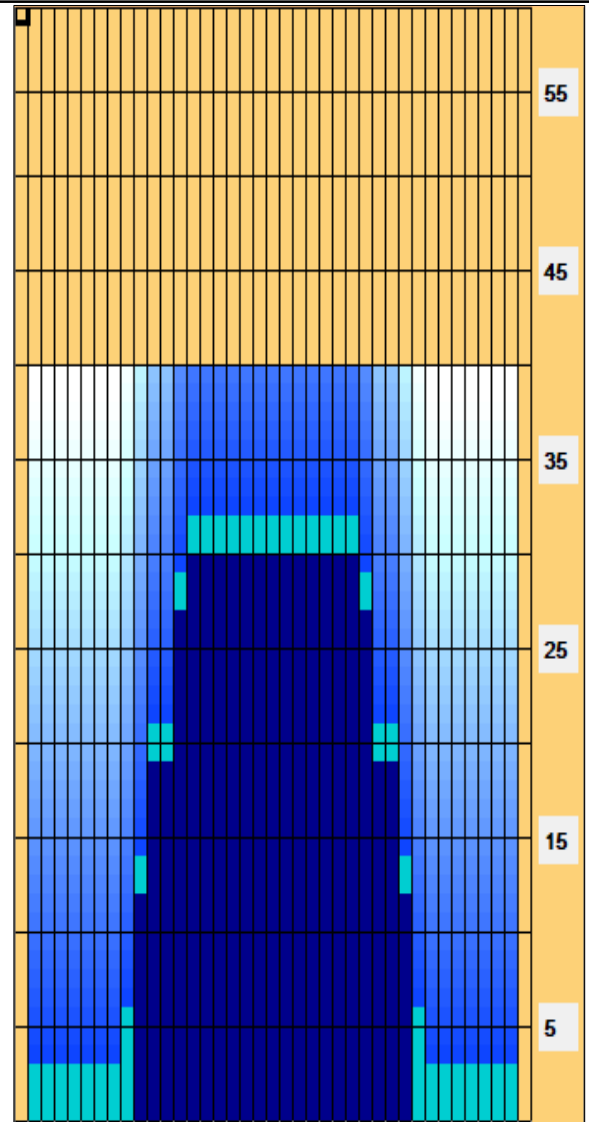
| Start | Stop    | Loads | Speed | Crossed | Start | End  | Feet | T.Oil |
|-------|---------|-------|-------|---------|-------|------|------|-------|
| 1     | 2L 2R   | 3     | 14    | 111     | 0.0   | 3.9  | 3.9  | 5550  |
| 2     | 9L 9R   | 1     | 18    | 23      | 3.9   | 6.4  | 2.5  | 1150  |
| 3     | 10L 10R | 3     | 18    | 63      | 6.4   | 14.0 | 7.6  | 3150  |
| 4     | 11L 11R | 3     | 18    | 57      | 14.0  | 21.6 | 7.6  | 2850  |
| 5     | 13L 13R | 3     | 18    | 45      | 21.6  | 29.2 | 7.6  | 2250  |
| 6     | 14L 14R | 1     | 22    | 13      | 29.2  | 32.3 | 3.1  | 650   |
| 7     | 2L 2R   | 0     | 22    | 0       | 32.3  | 34.0 | 1.7  | 0     |
| 8     | 2L 2R   | 0     | 26    | 0       | 34.0  | 40.0 | 6.0  | 0     |

| Start | Stop    | Loads | Speed | Crossed | Start | End  | Feet  | T.Oil |
|-------|---------|-------|-------|---------|-------|------|-------|-------|
| 1     | 2L 2R   | 0     | 30    | 0       | 40.0  | 30.0 | -10.0 | 0     |
| 2     | 14L 14R | 1     | 22    | 13      | 30.0  | 26.9 | -3.1  | 650   |
| 3     | 13L 13R | 3     | 18    | 45      | 26.9  | 19.3 | -7.6  | 2250  |
| 4     | 11L 11R | 3     | 18    | 57      | 19.3  | 11.7 | -7.6  | 2850  |
| 5     | 10L 10R | 2     | 14    | 42      | 11.7  | 7.8  | -3.9  | 2100  |
| 6     | 2L 2R   | 0     | 10    | 0       | 7.8   | 0.0  | -7.8  | 0     |

Conditioner:  
Type In or Select One

TransferType:  
Type In or Select One

- Forward
- Reverse
- Combined
- Buff



<p> Reverse Drop Brush 32&#39;. Download PDF for full description.</p>

| Item             | 3L-7L:18L-18R        | 8L-12L:18L-18R      | 13L-17L:18L-18R     | 18L-18R:17R-13R      | 18L-18R:12R-8R      | 18L-18R:7R-3R        |
|------------------|----------------------|---------------------|---------------------|----------------------|---------------------|----------------------|
| Description      | Outside Track:Middle | Middle Track:Middle | Inside Track:Middle | Middle: Inside Track | Middle:Middle Track | Middle:Outside Track |
| Track Zone Ratio | 7.67                 | 2.5                 | 1.02                | 1.02                 | 2.5                 | 7.67                 |

